



www.rollsec.com.au

About Rollsec

Rollsec is a Brisbane based company specialising in manufacturing roofing, walling materials and accessories.

With over two decades of experience in the roofing and manufacturing industry, the Rollsec team have the knowledge and commitment to create and provide customised products to suit any need.

We manufacture high quality roofing materials for a longer lasting roof and a better looking home. Our products range from roof sheeting and rainwater products through to custom folded flashings and accessories.

We Supply Direct to the Public

Our extensive product range is perfect for both tradespeople and the general public.

Competitive Pricing

We know the importance of a budget, which is why our products are competitively priced.

Great Customer Service and Reliability

We pride ourselves on providing professional advice and reliable service for each and every customer.

Fast Turnarounds

We understand that time is money. When your job requires materials promptly, we will strive to make this happen.

Committed to Custom Products

The Rollsec team combines knowledge and commitment to create and provide a huge range of different customised products to tradespeople and the general public alike.

Contact us on **07 3267 7171** or sales@rollsec.com.au for any assistance.

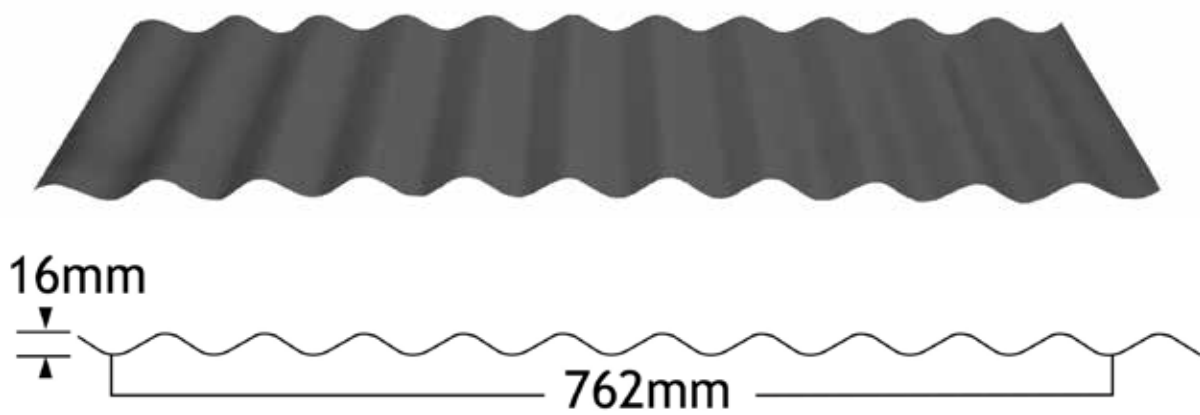


Product Selection

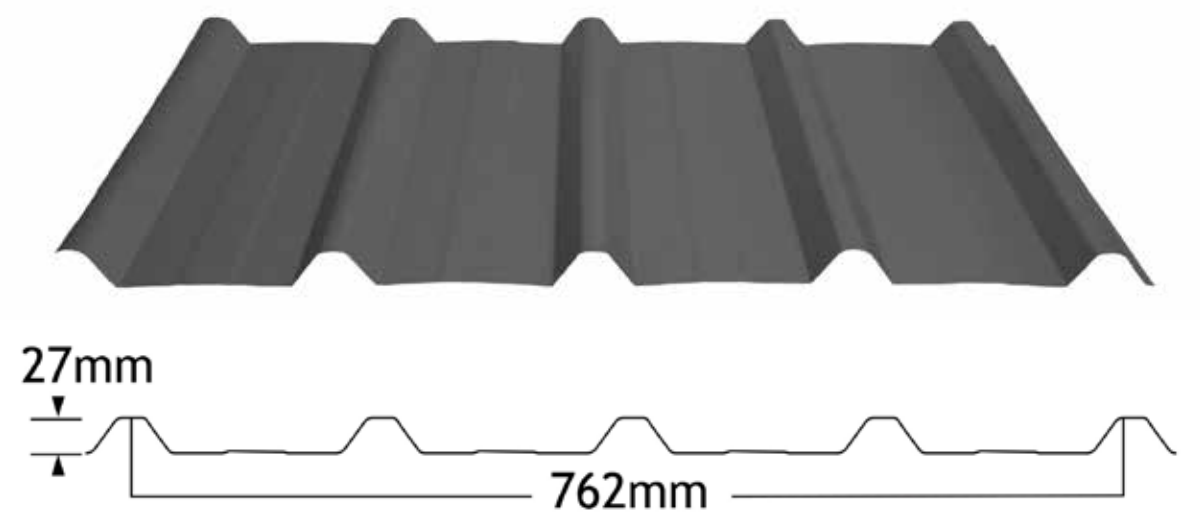
Roofing

To create a classic home that's built to last in the harsh Queensland climate, look no further than metal roof sheeting. Corrugated and Five Rib profiles are available in 0.42 bmt and 0.48 bmt in the full classic colour range and cut to any length. Rollsec also offers a range of other roofing profiles available on request.

Corrugated

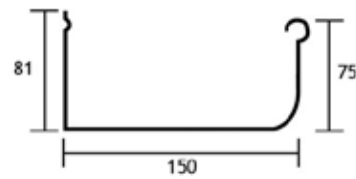
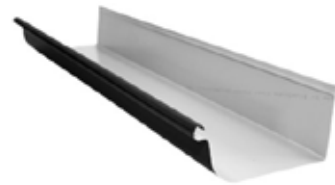


Five Rib



Protect your home from the rain and suit traditional or modern architecture with our different quad and square style gutters and accessories. Available in the full classic colour range and cut to any length.

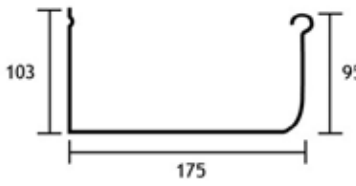
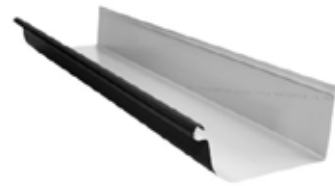
150 Quad



Accessories

- Concealed and Spike Brackets
- Stiffener and Overstrap Brackets
- Stop Ends and Return Ends
- Internal and External Corners
- Downpipe Drops
- Snap Clips

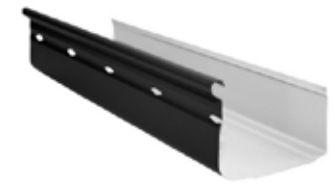
175 Quad



Accessories

- Concealed and Spike Brackets
- Stiffener and Overstrap Brackets
- Stop Ends and Return Ends
- Internal and External Corners
- Downpipe Drops
- Snap Clips

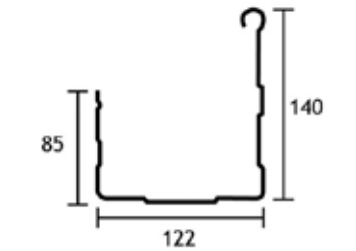
150 Hi-Front Quad



Accessories

- Concealed and Spike Brackets
- Stiffener Brackets
- Stop Ends
- Internal and External Corners
- Downpipe Drops
- Snap Clips

125 Square-Line



Accessories

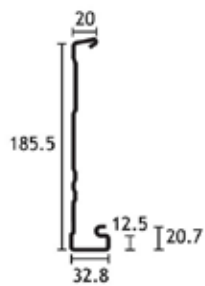
- Concealed Brackets
- Stiffener Brackets
- Stop Ends
- Internal and External Corners
- Downpipe Drops
- Snap Clips

Product Selection

Rainwater Products

For a beautiful, functional roof whatever the weather, the Rollsec rainwater range is ideal. We provide fascia, downpipes, rainwater heads and more. All of these products are available in the full classic colour range. Fascia is cut to any length and downpipes are available in stock lengths of 1.8m and 2.4m. Rainwater heads are custom made to order.

Fascia



Accessories

- Rafter Brackets
- Joiners
- Snap Clips
- Internal and External Corners

Downpipes



100mm x 75mm



90mm

Available in stock lengths of 1.8m and 2.4m. Other sizes are also available.

Accessories

- Elbows
- Offsets
- Clips / Straps
- Drops

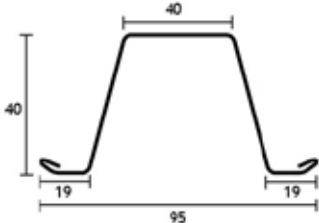
Rainwater Heads



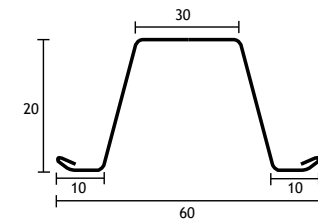
A range of styles and sizes available and custom made to suit your requirements

Your roof will be protected inside and out with Rollsec's range of roofing accessories. We supply roof battens and insulation, ridge capping and more. Roof battens are available in stock lengths of 6.5m, ceiling/safety battens are available in stock lengths of 6.1m and roll top ridge capping is cut to length.

Roof Battens and Ceiling/Safety Battens



Available in stock lengths of 6.5m



Available in stock lengths of 6.1m

Insulation - Blanket and Whirlybirds

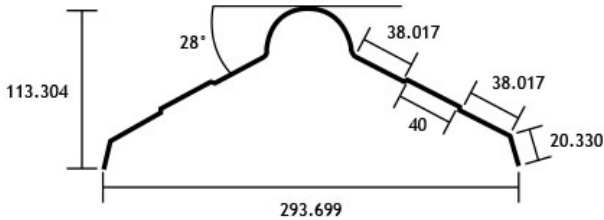


55mm and 75mm thicknesses



300mm diameter

Roll Top Ridge Capping



Product Selection

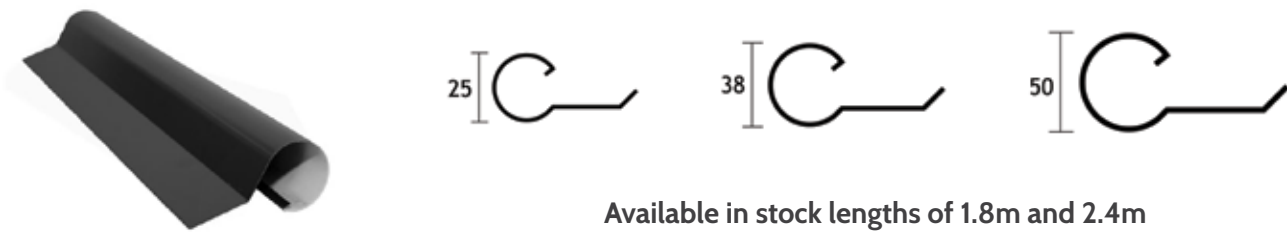
Roofing Accessories

Rollsec’s superior roofing accessories includes ridge capping, gable rolls, barges and more. Three break ridge capping, barge flashings and barge capping is cut to length and gable rolls are available in stock lengths of 1.8m and 2.4m.

Three Break Ridge Capping



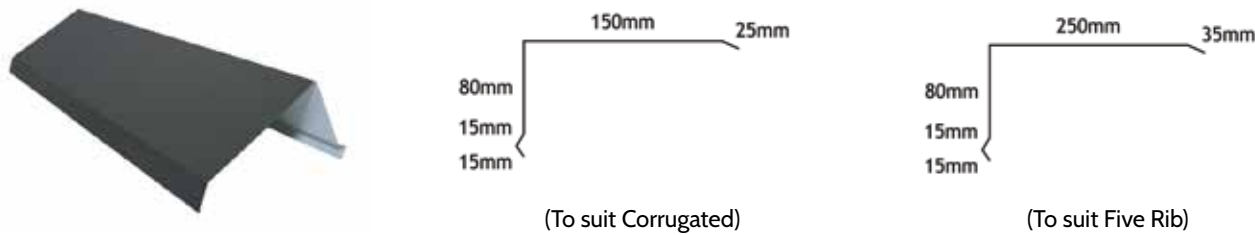
Gable Rolls



Barge Capping



Barge Flashings



All flashings can be custom folded to suit any application

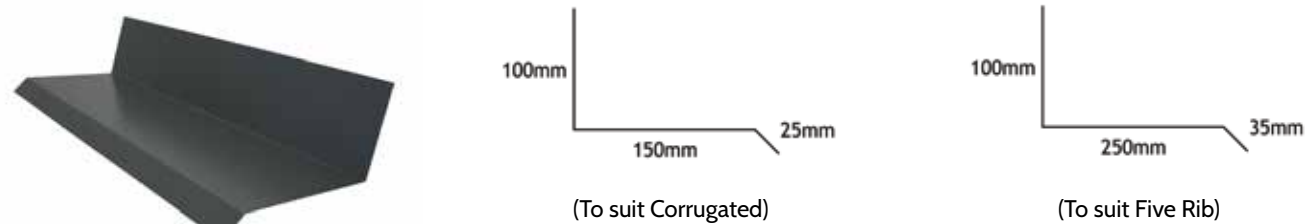
Valleys



Tile Valleys



Apron Flashings



All flashings can be custom folded to suit any application

Product Selection

Polycarbonate and Fibreglass

Rollsec's Polycarbonate and Fibreglass sheeting is available in a range of profiles and colours to provide the very best protection for your home. All sheets are cut to length to suit your requirements.

Polycarbonate

Level One - Standard Polycarbonate

All the below colours are available in Corrugated, Greca and Five Rib profiles, except Smooth Cream which is not available in Five Rib.



Level Two - Frosted Polycarbonate

The below colours are available in the Corrugated profile.

Level Three - Heat Reducing Polycarbonate

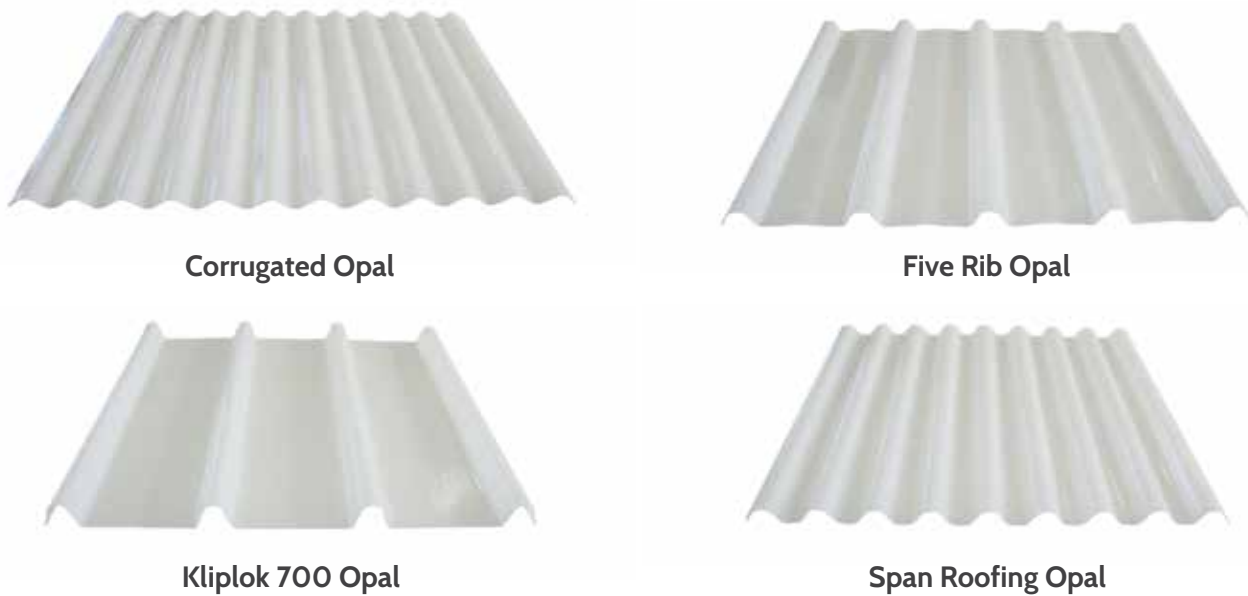
The below colours are available in the Corrugated and Greca profile.



Fibreglass

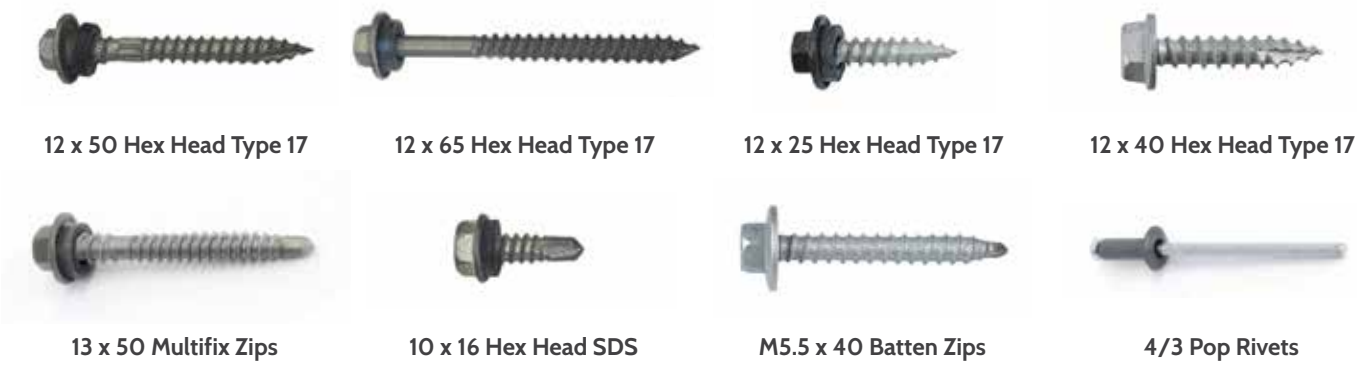
2400 Series Fibreglass

The below profiles are available in clear and opal. A large range of other profiles available upon request.



We stock a huge range of different fasteners and accessories to suit a wide variety of applications. Some of our most popular items can be found below.

Fasteners and Rivets



Touch Up Paint and Dektites



Available in the full classic colour range



Available in a range of different sizes

Silicone

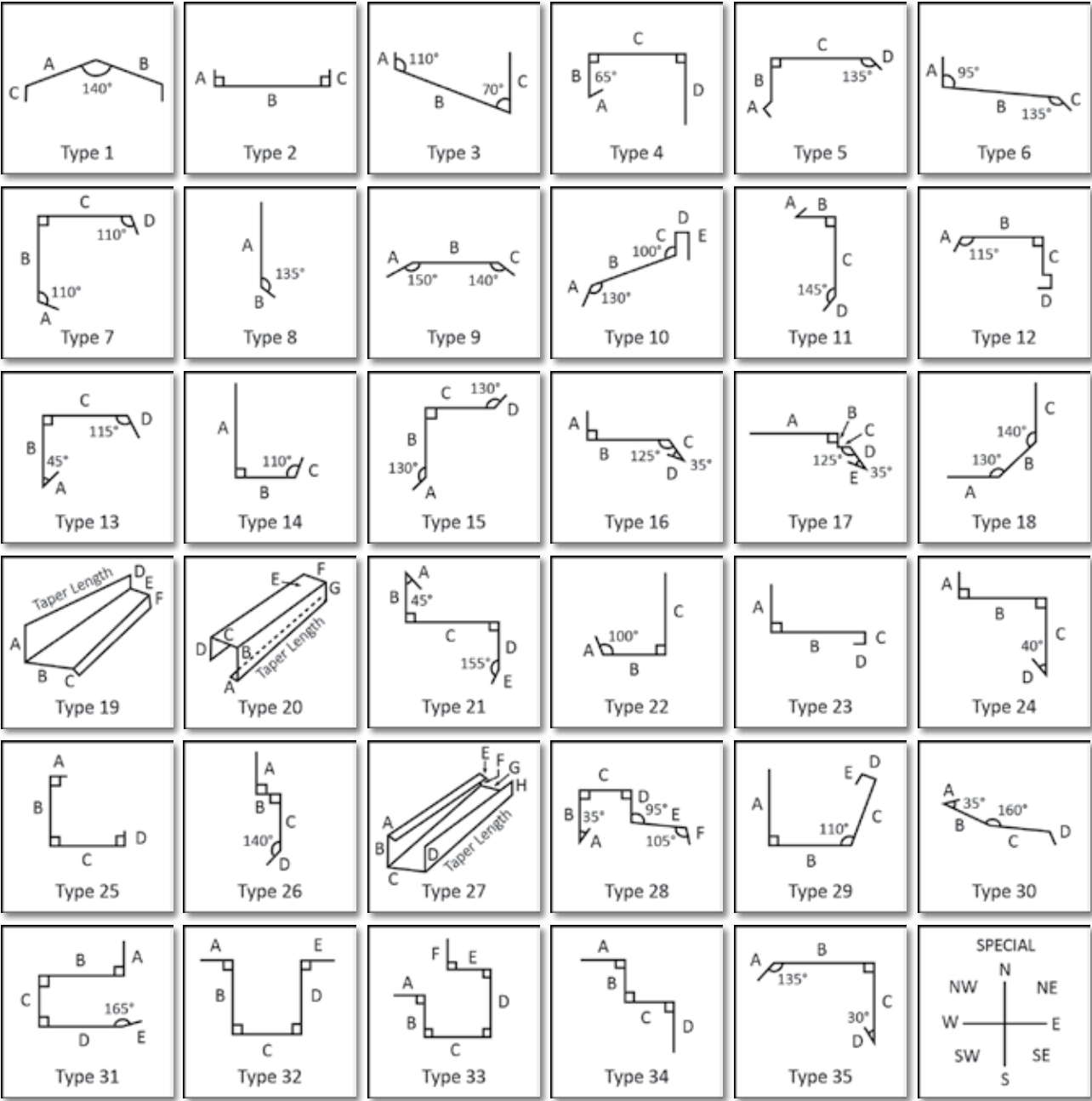


Product Selection

Flashings

To protect your roof and your home, look no further than the custom flashings provided by the team at Rollsec. These products will improve the overall appearance of your roof and property, no matter the style.

Our custom range includes aprons, barges, box gutters, parapet capping and window flashings. If you're not sure what the best option is for you, simply get in touch. Our expert team will be happy to provide advice on everything from functionality to style.



Minimum flashing fold is 8mm. Safety edge = 2 Bends. Maximum flashing length is 8 LM. Flashings under 1 LM will be charged at a minimum of 1 LM. Standard bend tolerance is ±2mm. Please advise if the flashing length is critical.

UniCote® Steel



UniCote® is highly durable and flexible with premium weather resistant properties. The paint system is proven to provide resistance to chipping, peeling or cracking along with offering excellent colour retention and high formability.

Technical

Independently laboratory tested to comply with the AS/NZS2728:2013 performance requirements. Suitable for ISO9223:2012. Atmospheric Classifications C1 - C3.

Substrate

Hot Dipped Aluzinc steel coil AZ150 coating. Manufactured to AS 1397:2011.

Pre-treatment

Corrosion resistant chromate conversion coating.

Primer

Flexible corrosion resistant chromated primer.

Top Coat

Super Advanced Durable Polyester (SADP).

Backing Coat

Shadow Grey regular modified polyester (RMP).

Gloss

Typical gloss levels are 25%, 55% and 80% gloss measured in accordance with AS/NZS 1580.602.2 (60°C).

Strippable Film

Products are supplied with an easily removed strippable protective film. This material has a relatively short life span when exposed to sunlight and weather. It should be removed either just before or immediately after installation.

Warranty Terms

Warranties differ for residential, commercial and industrial buildings in ISO 1-3 environments, depending on the application of the steel.

		Environment (ISO CAT) 1-3
Roofing*	Paint	20 years
	Perforation	30 years
Wall Cladding*	Paint	15 years
	Perforation	15 years
RWG*	Paint	20 years
	Perforation	20 years

* Applicable to areas over 1km from Marine and Industrial environments. Refer to specific warranty information for full terms and conditions, including exclusions and minimum maintenance requirements. Buildings close to industrial areas which are exposed to corrosive chemicals may require P.V.D.F for added protection. Visit unicote.com.au and complete the warranty enquiry form.



Performance Testing

For affordable pre-painted steel we trust UniCote® Steel. UniCote® is tested and manufactured to withstand the harshest Australian conditions. UniCote® is backed by a strong warranty, so you know it's made to last.

	Scratch Resistance Good scratch resistance. Testing includes needle scratch test - no marking of paint surface when a needle with up to a 2kg weight attached is drawn across. AS 2331.4.7.
	Impact Resistance No loss of paint adhesion after a test piece is struck on the reverse side with a specified force, in line with the test methodology.
	Bend Test No loss of adhesion or paint cracking when bent around a diameter equal to five times the thickness of the sheet.
	Heat Resistance Suitable for continuous service up to 100°C. Continuous service at higher temperatures may cause some colour change and damage to the paint film.
	Salt Spray Meets the requirements of AS/NZS2728:2013.
	Humidity Resistance Meets the requirements of AS/NZS2728:2013.
	QUV Resistance (durability of coating system) Meets the requirements of AS/NZS2728:2013.

Note: Tests are conducted on a flat panel.

Colour Chart

Whether your home is classic or modern, you will find the perfect colours to suit your home with our UniCote® colour range. Choose from any of the 22 available colours below.

Smooth Cream / Classic Cream™	
Off White / Surfmist®	
Merino / Paperbark®	
Dusk / Evening Haze®	
Gull Grey / Shale Grey™	
Birch / Dune®	
Coventry / Cove®	
Armour Grey / Windspray®	
Mist Green / Pale Eucalypt®	
Gulf / Gully®	
Manteal / Mangrove®	
Wallaroo / Wallaby®	
Jasmin Brown / Jasper®	
Heritage Red / Manor Red®	
Territory / Terrain®	
Basal / Basalt®	
Slate Grey / Woodland Grey®	
Monolith / Monument®	
Iron Grey / Ironstone®	
Caulfield Green / Cottage Green®	
Mountain Blue / Deep Ocean®	
Ebony / Night Sky®	

Note: All colours shown above are indicative only. Slight variations may occur from the pre-painted metal. Equivalent colour names listed are trademarks of BlueScope Steel Limited and used only for comparison. The use of colour names in any Rollsec document indicates no more than the colour of the product supplied or a colour equivalency.



115 Crockford Street, Northgate QLD 4013

PO Box 1627, Toombul 4012

P. +61 7 3267 7171

E. sales@rollsec.com.au

www.rollsec.com.au